

# Work with Geographical Names in Latvia 2012-2013

Activities since the 15<sup>th</sup> Meeting of the  
Baltic Division of UNGEGN

# Geographical Names Authorities

(no changes since January 2012)

## Decision Makers

**Parliament  
and  
Government**

### **Ministries**

(Ministry of Culture, Ministry of Transport,  
Ministry of Environment and Regional  
Development, Ministry of Agriculture)

**Self-  
governments**

**Latvian Geospatial  
Information Agency  
(LGIA)**

# Geographical Names Authorities

(no changes since January 2012)

**Controlling, Advisory, Consulting and Scientific Bodies**

**State Language  
Centre**

**Latvian Geospatial  
Information Agency (LGIA)**

**State Language  
Agency**

**Latvian University  
(Institute of Latvian  
Language)**

# State Language Centre

A consultative expert body with recommendatory rights – **the Place Names Sub-commission of the Latvian Language Experts Board, the State Language Centre**, was re-established in May 18, 2012

The Sub-commission appraises the official names proposals, takes care of straighten out Latvian toponymy and protection of geographical names as a cultural heritage

It consists of 9 experts in linguistics, geography and cartography. The Sub-commission should be in session at least once per 2 months, the consulting and conclusion making via e-mail is being practiced, too

**6 official** conclusions-recommendations regarding re-naming and official geographical names proposals have already been made

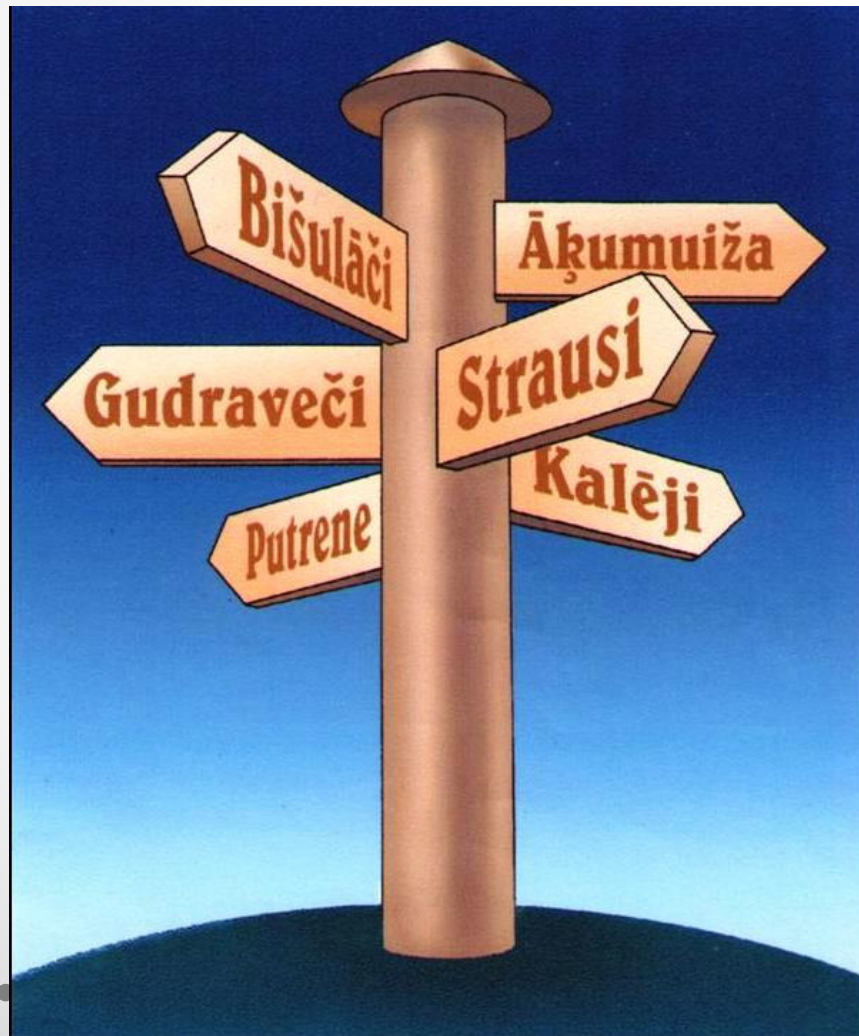


# Changes in Legislation

**Amendment of the “Geographical Names Information Regulations (Vietvārdu informācijas noteikumi)”** was adopted in July 2, 2013

The **Amendment postpones the deadline for the evaluation of natural features names for official approving** (task delegated to the Latvian Geospatial Information Agency) from the January 10, 2012 to the January 10, 2016 (this was necessary due to the lack of government subsidies)

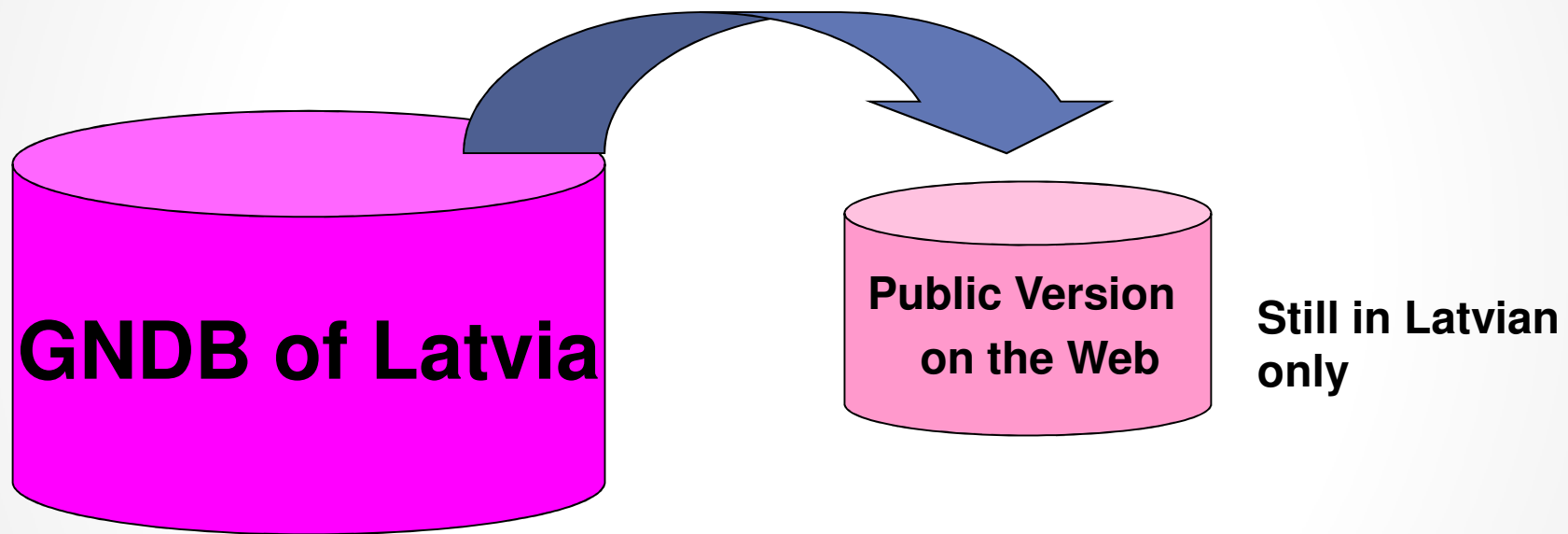
# Geographical Names Database of Latvia



**133 017 names of  
104 970  
geographical  
features**  
(02.09.2013.)

**Maintained by LGIA,  
Department of Geodesy  
and Cartography,  
Laboratory of  
Toponymy**

# Public Version of the Geographical Names Database



**Available at**

**<http://vietvardi.lgia.gov.lv/>**

# Map Browser

## “LĢIA Karšu Pārlūks”

The Map Browser “LĢIA Karšu pārlūks” maintained by Geospatial Information Agency - the test version (in Latvian and English) **offers geographical names search on different maps of Latvia in various scales (1: 1 000 000 - 1:10 000)**

The Browser provides names from the Public Version of the Geographical Names Database of Latvia and a set of names from the Topographic map of Latvia at scale 1:10 000

Borders and names of administrative and territorial units of Latvia also are accessible there

“LĢIA Karšu Pārlūks” is available at:

<http://kartes.lgia.gov.lv/>



# A New Geospatial Reference Data Distribution System

- A new ERAF funded project aiming to establish a national Geospatial Reference data Distribution System of Latvia «**Ģeotelpisko pamatdatu informācijas sistēma (ĢPIS)**» is going to be finished this year
- Besides other 6 e-services (geospatial metadata, geospatial data, co-ordinate calculator, permanent GPS base station information system *LatPos*, state geodetical network database, e-service for clients) **ĢPIS will include the reconstructed and elaborated Geographical Names Database of Latvia**
- **ĢPIS will provide the the full data lifecycle support** to ensure effective creation, maintenance and distribution of geospatial data
- **ĢPIS is one of the prerequisites of the (INSPIRE Directive) requirements implementation**

# Other Significant Toponymic Data Repositories

**Card Index of Place Names at the Institute of Latvian Language** (not computerized, more than 1 million entries)

**National Address Register** (officially approved identifiers for use in addressation)

public access (Latvian and English version):

<https://www.kadastrs.lv/>



# National Address Register

## Data on Addresses contains names of:

- **all administrative and territorial units** (including 110 counties, 497 civil parishes, 76 cities and towns)
- **6848 villages** (number of *official* villages is decreasing)
- **16 938 streets**
- **499 611 houses and other buildings**

The Address data maintenance system is under the serious improvement currently - State Land Service aims to automate and shorten the process of address registration, to develop a quality control already in phasis of data recording



# Other significant toponymic data repositories

- **State classifiers** (classifiers for water management etc.)
- Latvian and foreign **geographical names data base of Map Publishing Company “Jāņa sēta Map Publishers”**  
contains 218 000 geographical names in their original languages, as well as renderings: 91 000 - into Latvian, 34 000 – into Estonian, 14 000 into Lithuanian, 10 000 into Russian
- Other private resources (e.g. web portal [Ezeri.lv](http://Ezeri.lv))



# Linguistic Dictionaries of Geographical Names

**A new volume** - comprising toponyms beginning with “ R ” - of “*Latvijas vietvārdu vārdnīca*” (Latvian Place Names Dictionary, in Latvian), **is under the compilation in the Institute of Latvian Language**

- *extension of the toponymic dictionary:*  
Jānis Endzelīns *Latvijas PSR vietvārdi*, 2 parts (A – O), 1959, 1961.

Whole dictionary would comprise up to 10 volumes



# The Main State Mapping Projects

**Topographic Map,  
scale 1:50 000**

**131 sheet**

the 1<sup>st</sup> edition 1998 - 2007

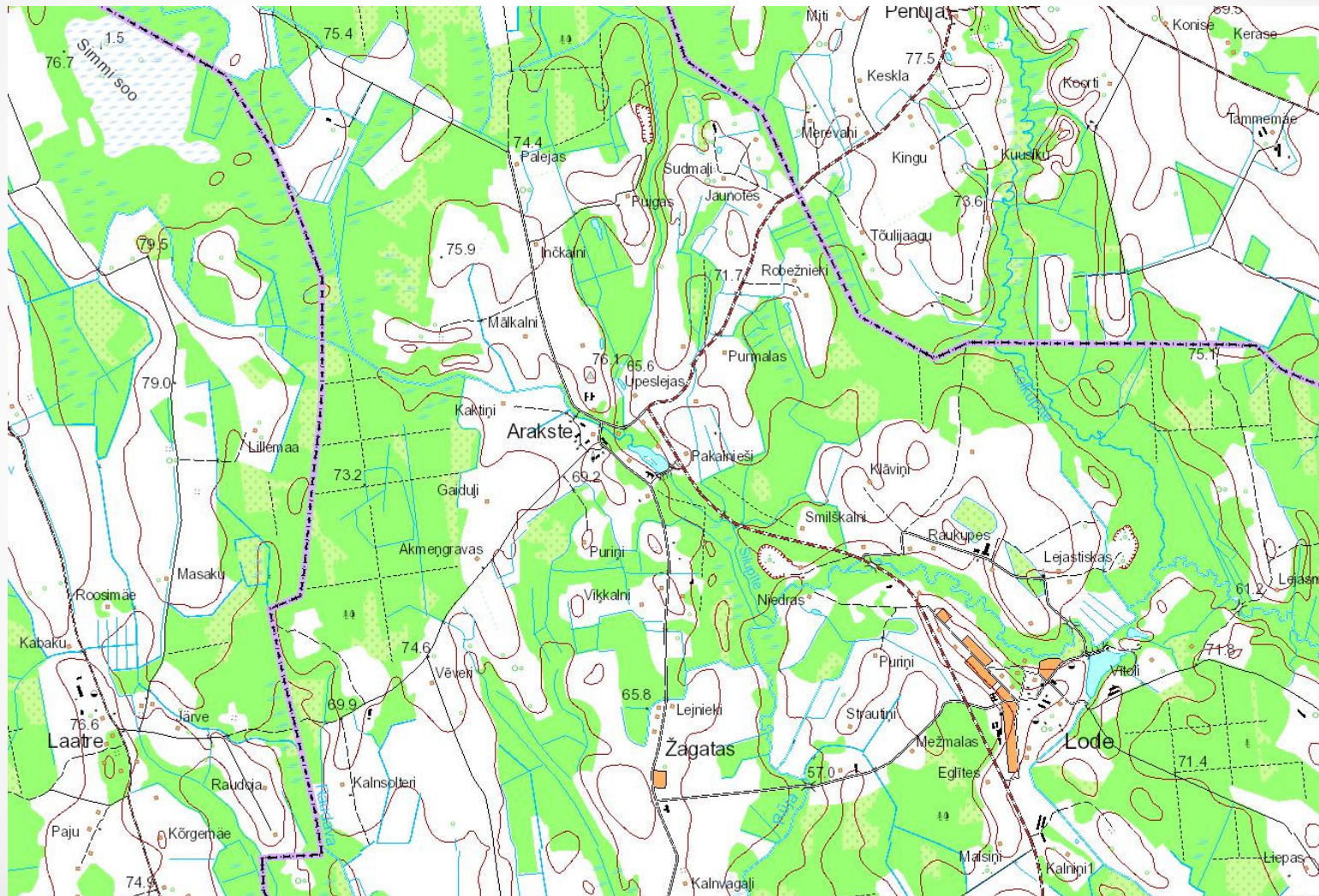
the 2<sup>nd</sup> edition 2006 - 2012

**the 3<sup>rd</sup> edition - preliminaries  
was started in 2012;**

**a new data encoding  
standard - DFDD**

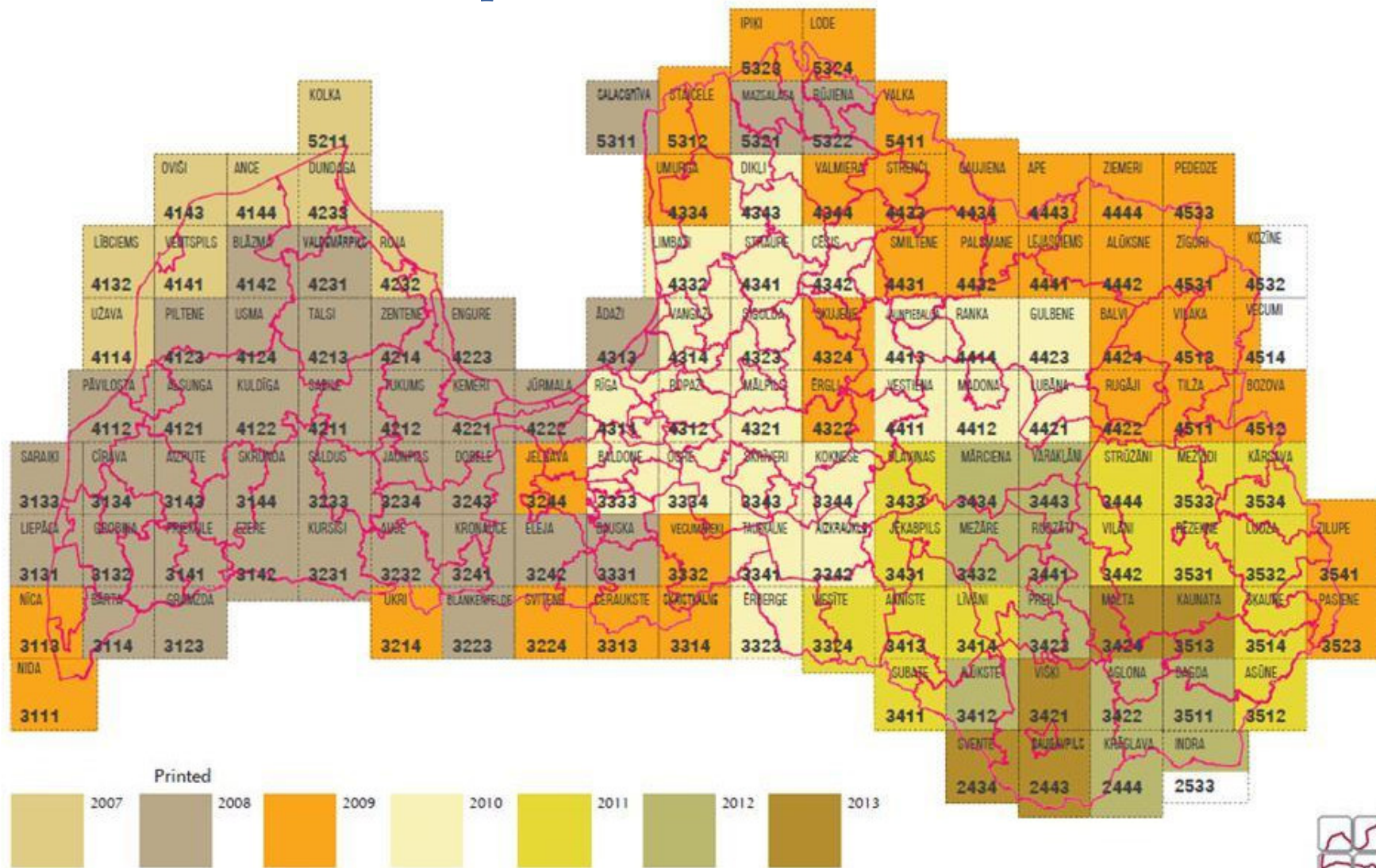
toponymy is  
being compiled  
by Laboratory of  
Toponymy

# Topographic Map of Latvia scale 1:50 000



# Topographic Map, scale 1:50 000

printed sheets





# The Main State Mapping Projects

## **Topographic Map, scale 1:10 000**

### **2557 sheets**

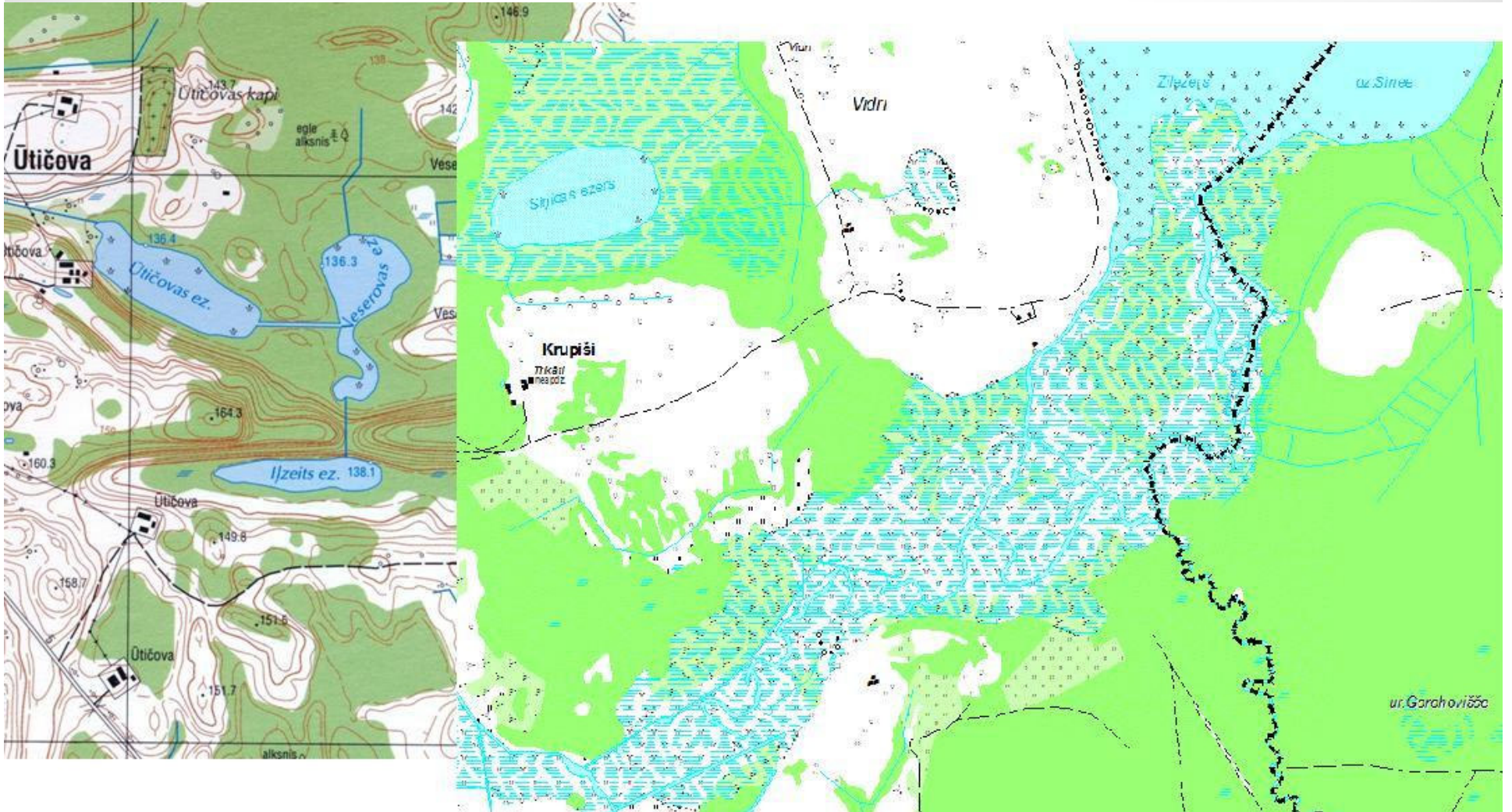
the 2<sup>nd</sup> edition 2003 - 2009  
(150 sheets are issued in a paper form – basically the Map is developed as digital database)

**the 3<sup>rd</sup> edition started in 2009**

until 2013 the toponymy had been checked by cartographers using the Geographical Names Database of Latvia and consulting with the Laboratory of Toponymy

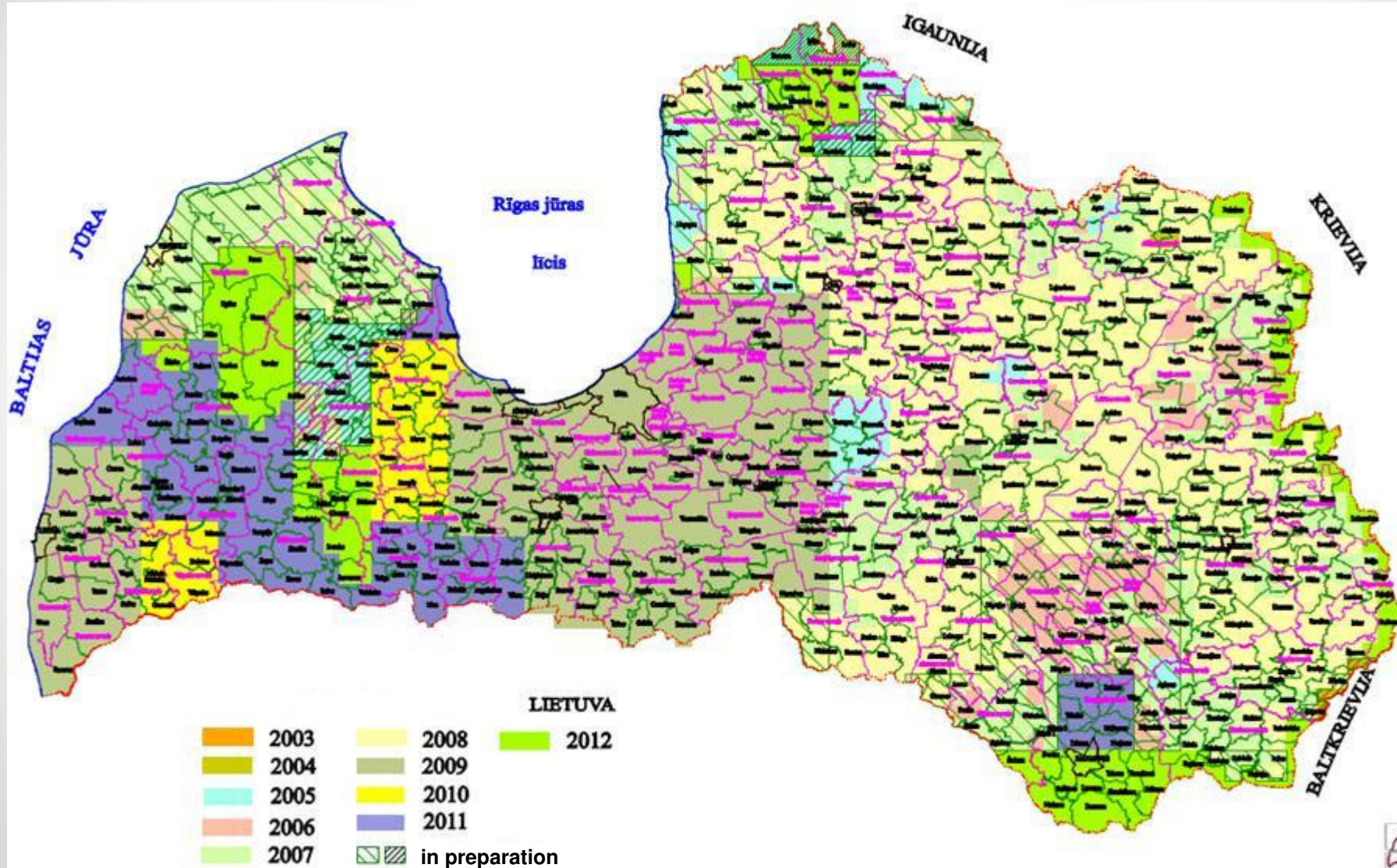
**now - toponymy is being checked and improved by the Laboratory of Toponymy**

# Topographic Map, scale 1:10 000



# Topographic Map, scale 1:10 000

actuality of the data



# The Main State Mapping Projects

## **Overview map**

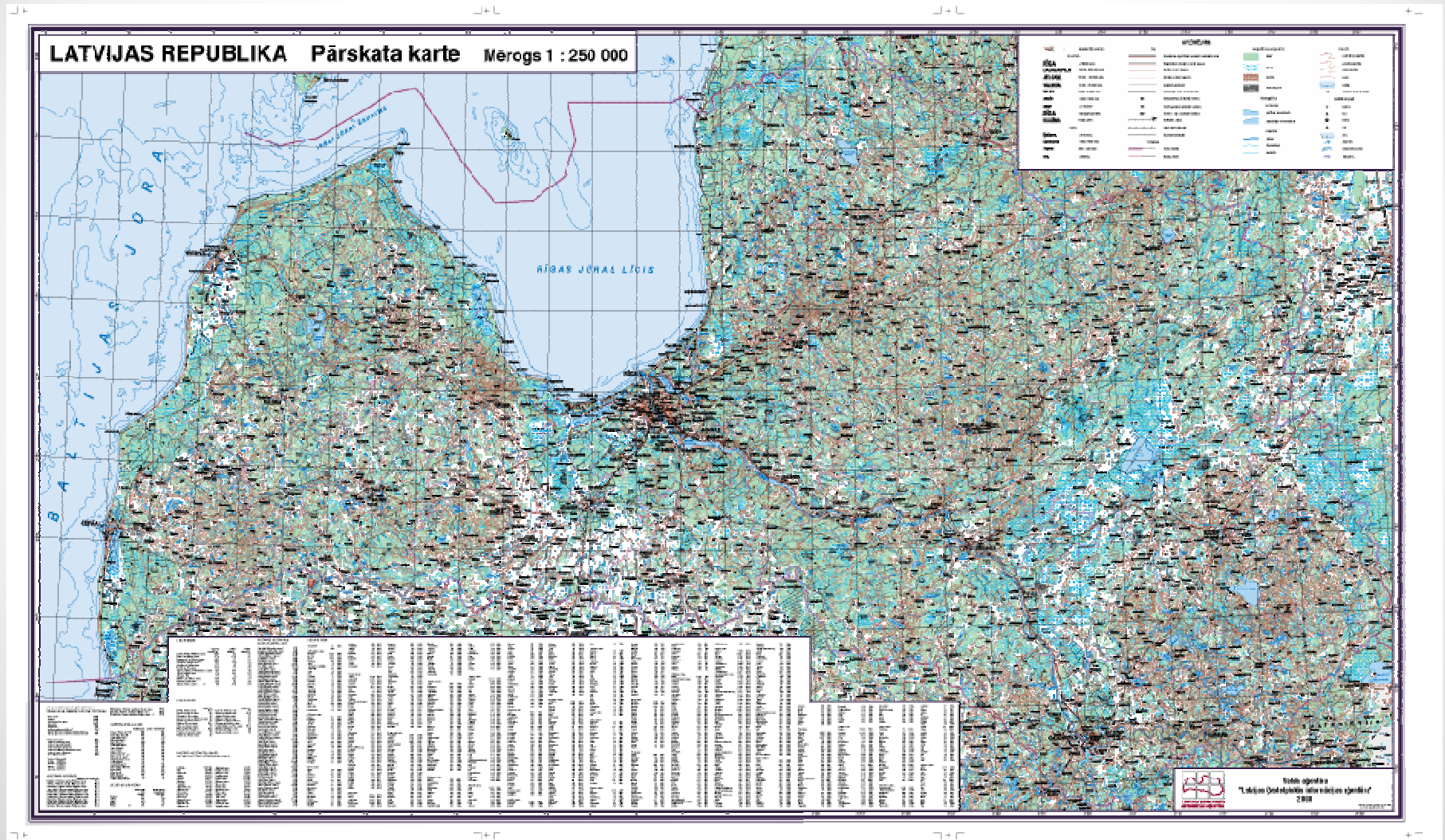
**scale 1:250 000**

comprises 3 sheets,  
the 1<sup>st</sup> edition - 2008

**the 2<sup>nd</sup> edition was  
published in 2012**

toponymy is being  
compiled from  
sources of  
Laboratory of  
Toponymy and  
checked by  
toponymists

# Overview Map, scale 1:250 000



# Overview Map, scale 1:250 000



# Private Mapping COVERS THE TERRITORY

OF LATVIA AND OTHER COUNTRIES



SIA “Karšu izdevniecība Jāņa sēta” -  
“**Jāņa sēta Map Publishers**”

- the most significant new product related to the geographical names -

“**Great Latvia atlas**” in scale  
**1:100 000** (1:20 000 for cities and largest villages)  
published in 2012

(500 pages,  
**more than 100 000 geographical names**);

# Exonyms

The section "Valstu un valodu nosaukumi (The Country and Language Names)" of the State Language Centre's website was updated with **new renderings of geographical names** in 2012:

The **list of national territorial unit names of European Union member states in English and Latvian** is published now as the sub-section named „Eiropas Savienības dalībvalstu reģioni (Regions of European Union Member States)" ([http://www.vvc.gov.lv/export/sites/default/files/ESdalibvalstu\\_re\\_gioni\\_21.05.2012.pdf](http://www.vvc.gov.lv/export/sites/default/files/ESdalibvalstu_re_gioni_21.05.2012.pdf)).

The List fits with the EU regional classification NUTS (*nomenclature commune des unités territoriales statistiques*) established for statistical purposes.

**Rules for rendering the proper names from the Modern Greek into Latvian** are worked out by linguist Ilze Rūmniece and published in 2012





# Problems

- Currently **hundreds of small villages have lost the official status** in the Adress Register. Therefore the village names are being used less, and the data about the amount of inhabitants are not available
- **Lost of historical farmstead names - renaming**  
*Sēņraugi (only one farmstead bore this name!), currently Liepkalni (more than 200 farmsteads in Latvia are named Liepkalni)*  
*Rinnas (was only one), currently Rančo (there are 7 «Rančo» in Latvia now)*  
(How to prevent this?)
- **Incorrect place names in officially approved lists and other sources**  
*Alkšnāres, correctly Alkšņāres , Kirši, correctly Ķirši, Cērmenes ezers, correctly Cārmans or Cārmana ezers*

# Problems

- **Wrong pronunciation** of place-names

*Roja - [roja], correctly [ruõja], Pūre – [pūre], correctly [pûre], Solojs- [???], correctly soluõjs]*

- Place names from the **Card Index of Place Names of the Institute of Latvian Language** (more than 1 million entries) is not possible to locate on maps, because place names are without coordinates, Card Index is not digitalized
- Standardization of **dialectal names**
- **Original Livonian place names** – how to return them into use?



# List of Contacts

**Latvijas Ģeotelpiskās informācijas aģentūra** (*Latvian Geospatial Information Agency*)

Ojāra Vācieša iela 43, Rīga, LV-1004, Latvia

[www.lgia.gov.lv/](http://www.lgia.gov.lv/); e-mail: [info@lgia.gov.lv](mailto:info@lgia.gov.lv)

Mrs. Vita Strautniece, Laboratory of Toponymy,  
phone: (+371) 29449690;

e-mail: [vita.strautniece@lgia.gov.lv](mailto:vita.strautniece@lgia.gov.lv)

**Valsts valodas centrs** (*State Language Centre*)

K.Valdemāra iela 37, Rīga, LV-1010

[www.vvc.gov.lv/](http://www.vvc.gov.lv/); e-mail: [info@vvc.gov.lv](mailto:info@vvc.gov.lv);

Phone: (+371) 67331814, fax: (+371) 67336038

# List of Contacts

**LU Latviešu valodas institūts** (*Latvian Language Institute, University of Latvia*)

Akadēmijas laukumā1, Rīga, LV-1050, Latvia

Phone: (+371) 67227696; e-mail: [latv@lza.lv](mailto:latv@lza.lv)

Mr. Ojārs Bušs, Group of Onomastic Research,  
phone: (+371) 67213606

**Valsts zemes dienests** (*State Land Service*)

11. novembra krastmalā 31, Rīga, LV-1050, Latvia

[www.vzd.gov.lv](http://www.vzd.gov.lv); e-mail: [vzd@vzd.gov.lv](mailto:vzd@vzd.gov.lv);

phone: (+371) 67038608, fax: (+371) 67038829;

Mr. Janis Karro, Head of Address Register Division,  
Department of Cadaster and Registers

phone: (+371) 67038645, e-mail [janis.karro@vzd.gov.lv](mailto:janis.karro@vzd.gov.lv)

**„Karšu izdevniecība Jāņa sēta”** (*Jāņa sēta Map Publishers*)

Stabu ielā 119, LV-1009 Rīga, Latvia

<http://www.kartes.lv>; e-mail: [kartes@kartes.lv](mailto:kartes@kartes.lv)

Phone: (+371) 67317540; fax: (+371) 67317541

# Thank you for your attention!

**Vita Strautniece,**

Head of the Laboratory of Toponymy, LGIA

E-mail: [vita.strautniece@lgia.gov.lv](mailto:vita.strautniece@lgia.gov.lv)

**Zane Cekula,**

Toponymist, Laboratory of Toponymy, LGIA,

Leading researcher, Rēzekne Higher Education  
Institution

E-mail: [zane.cekula@lgia.gov.lv](mailto:zane.cekula@lgia.gov.lv)

[zaneic@inbox.lv](mailto:zaneic@inbox.lv)