



Quality of Estonian place names and geographical addresses

Mall Kivisalu
Estonia

Vilnius, October 2009



Contents

- Importance of the quality of Estonian place names and geographical addresses
 - Standardisation of place names and geographical addresses is being carried out in Estonia
 - Place names in geographical addresses
 - How the work is organised
 - Estonian state information system
 - ADS – support system for maintenance of databases
 - Collection of unofficial address data
 - Publication of data
-

How to reach the destination?



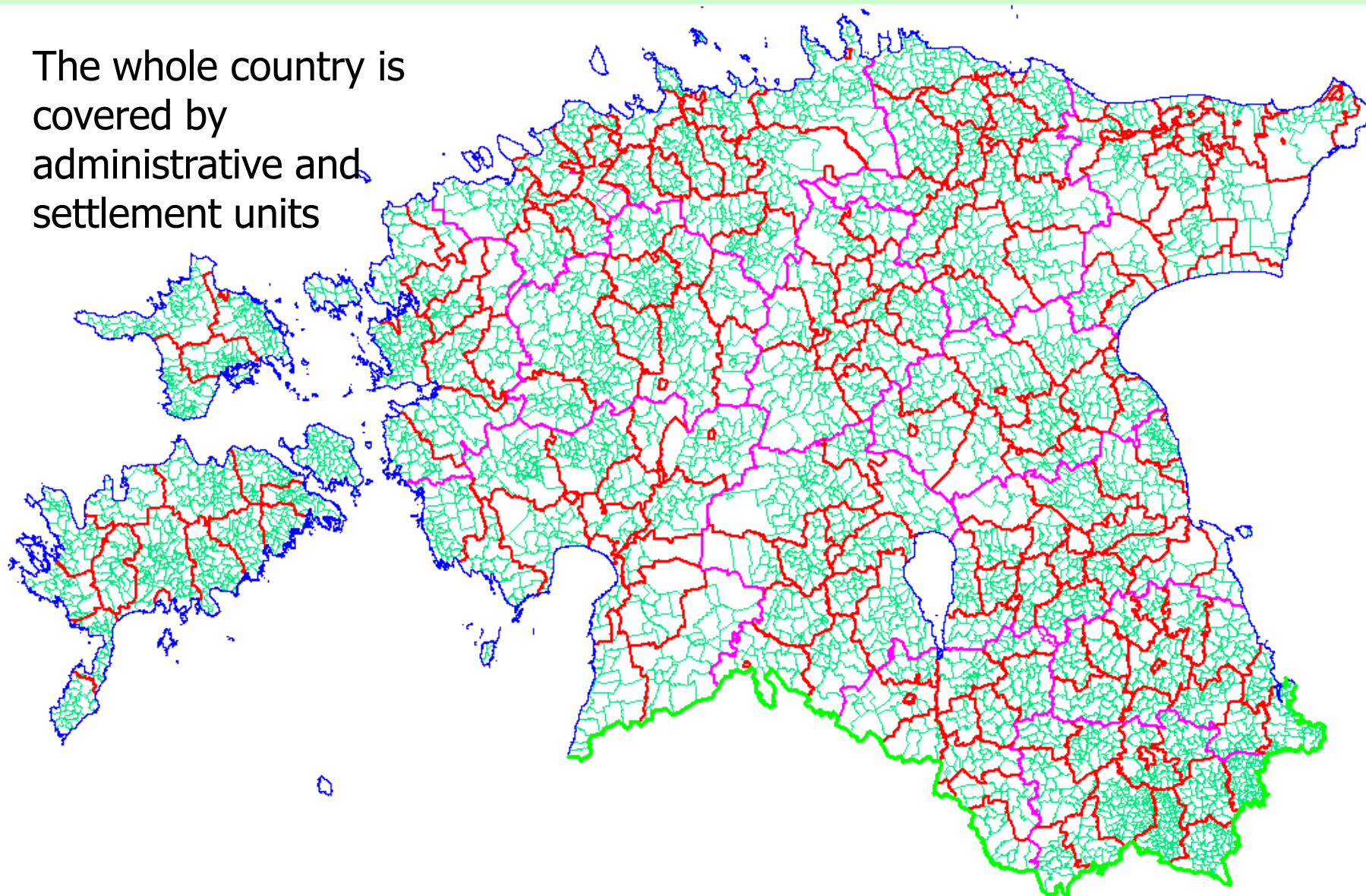
when you do not care where you are, you cannot get lost ...

Administrative and settlement units

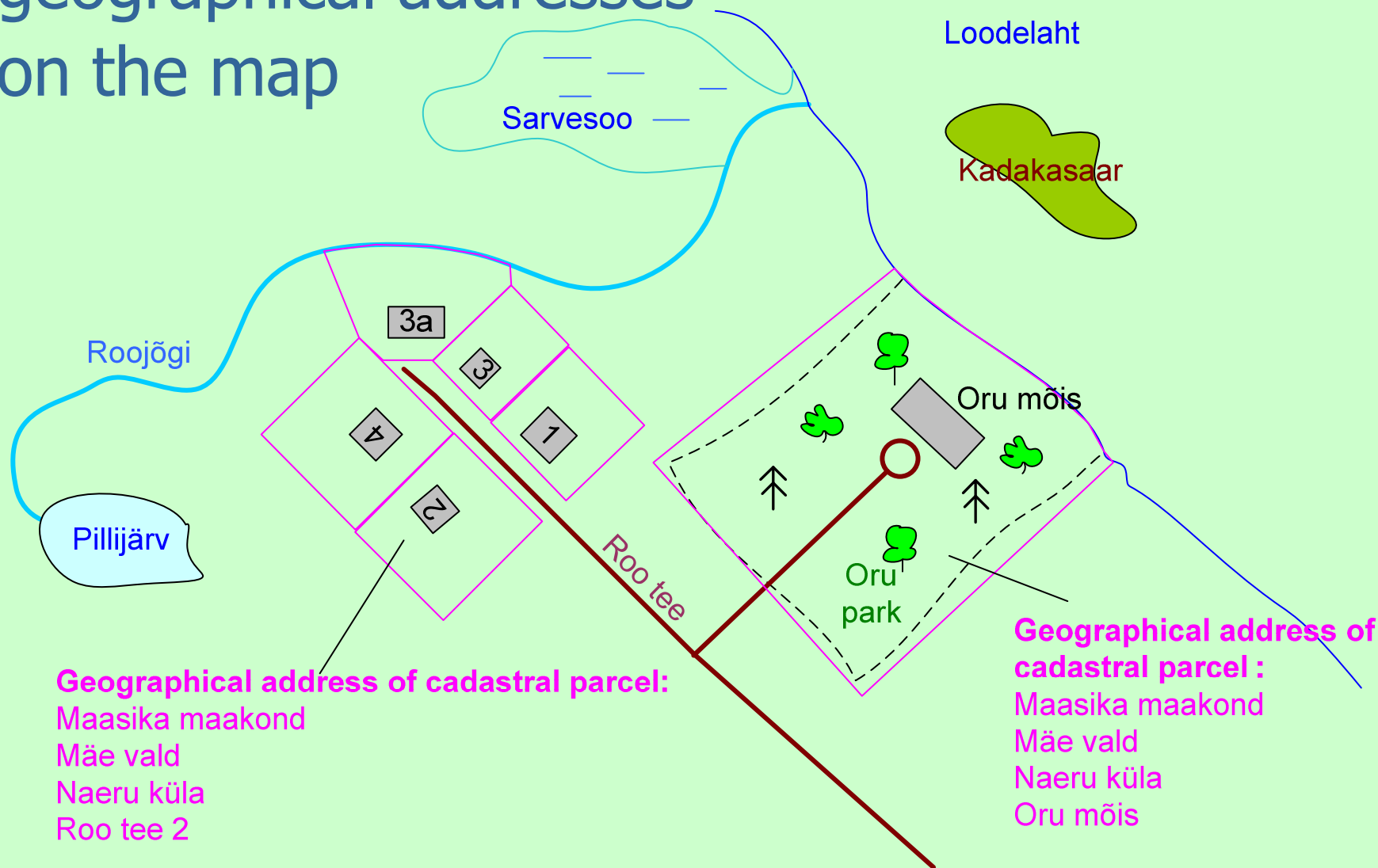


MAA-AMET
Estonian Land Board

The whole country is covered by administrative and settlement units



Place names and geographical addresses on the map



Institutions



MAA-AMET
Estonian Land Board



Ministry of Internal Affairs

<http://www.siseministeerium.ee>

Coordinator of place names. Drafts national legislation, performs supervision in the field of place names

Place Names Board

<http://www.eki.ee/knn/index2.htm>

Gives advice to authorities and officials approving place names



Institute of the Estonian Language

<http://portaal.eki.ee>

Office of onomastic expertise consults in linguistic matters, performs linguistic supervision



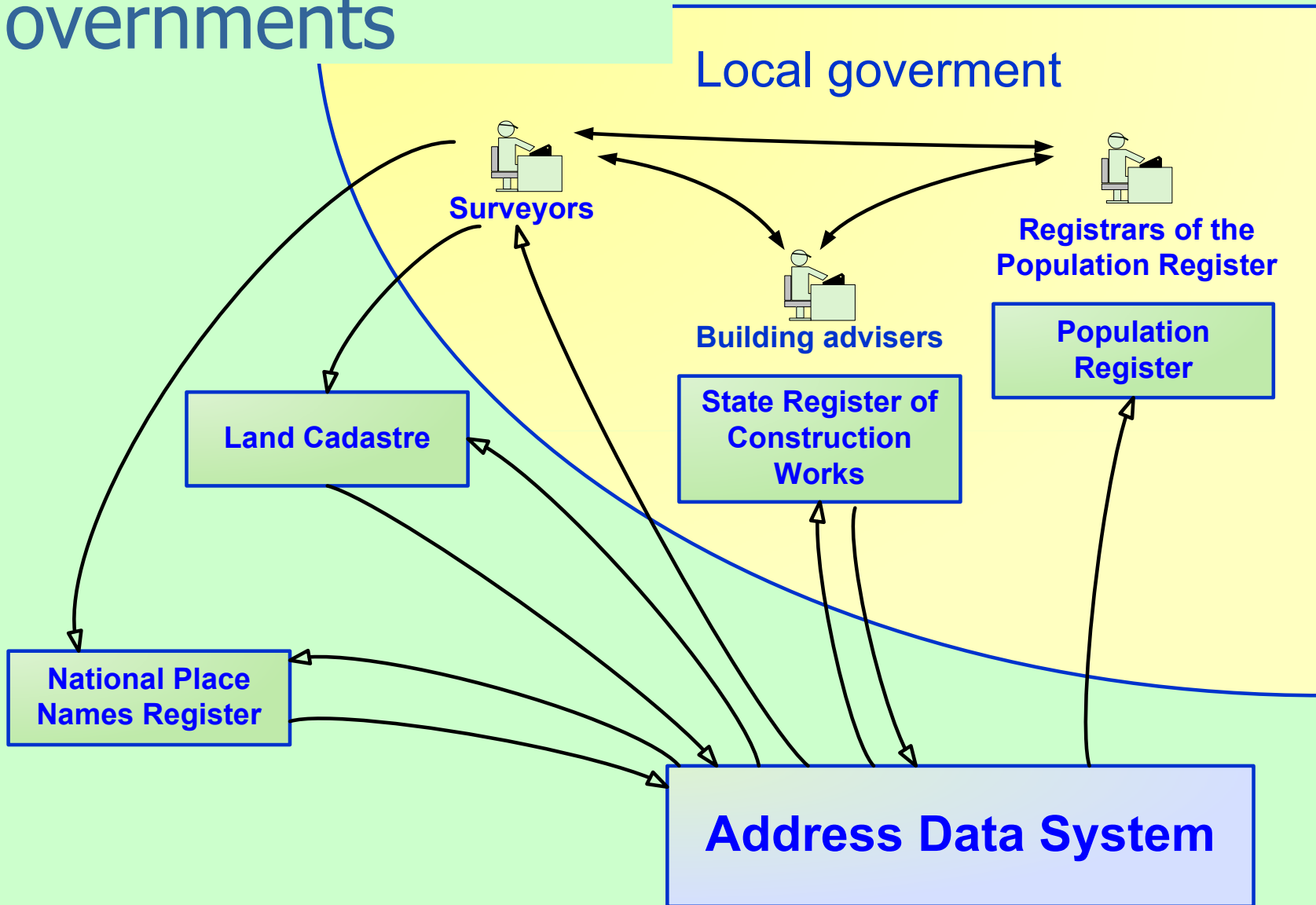
MAA-AMET
Estonian Land Board

Estonian Land Board

<http://www.maaamet.ee/>

Coordinates standardisation of place names and address data, consults in standardisation procedures

Data supply in local governments

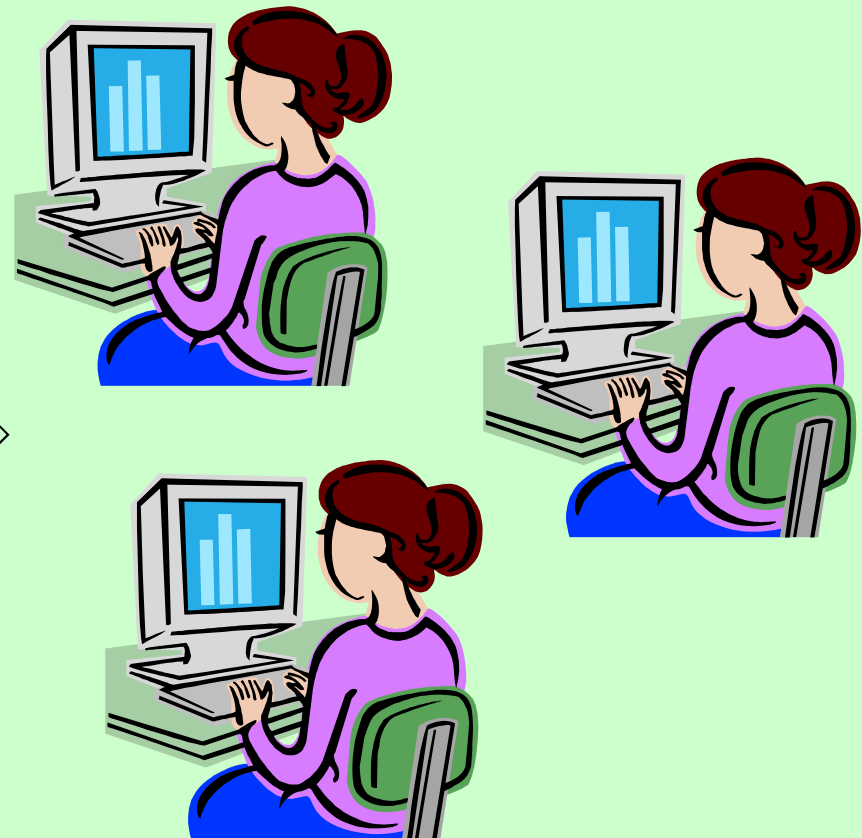


Workflow at the local government

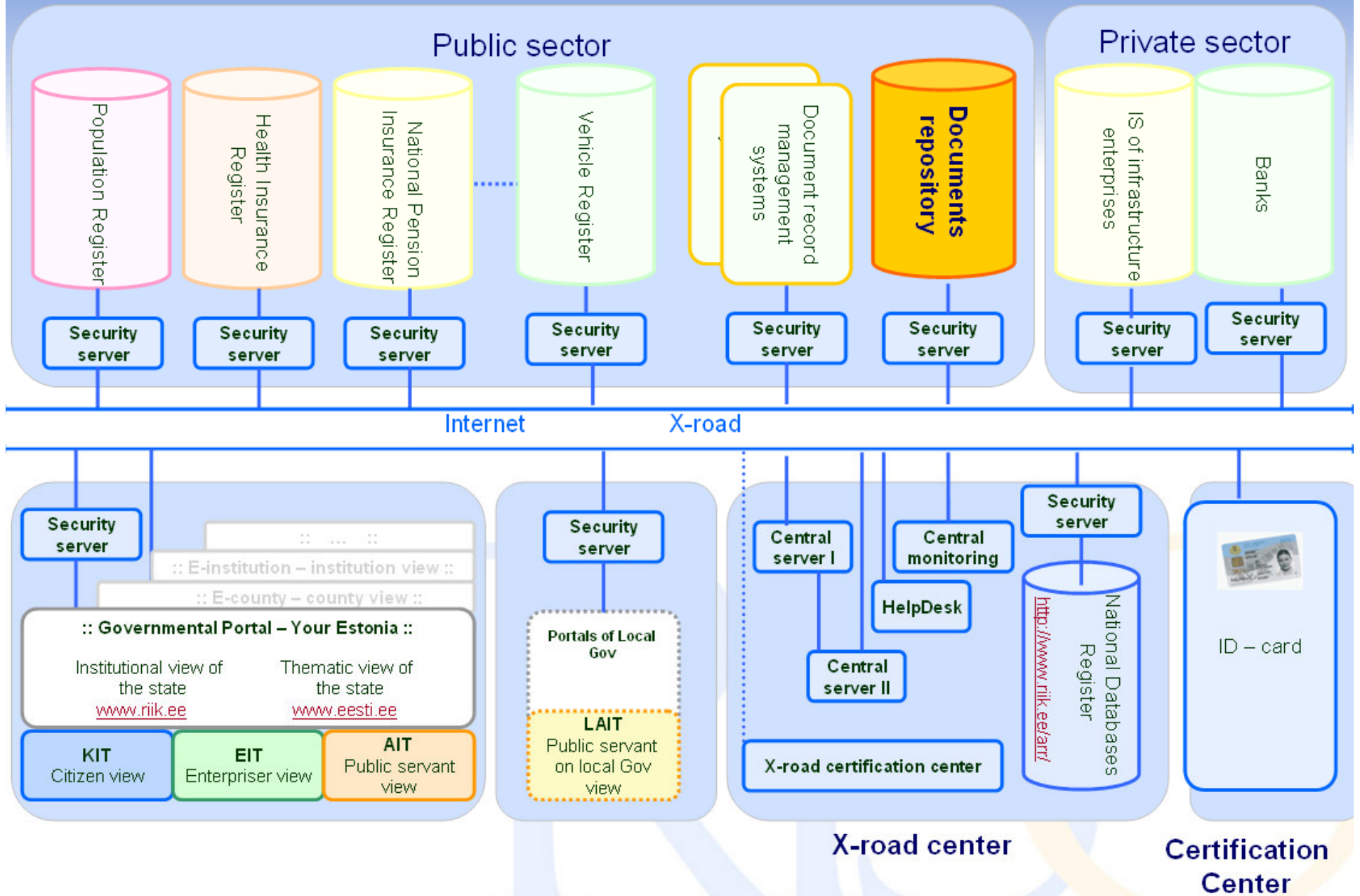
The local government body approves place names and geographical addresses



Registrars of respective registers enter the data into the registers controlling quality of the data by the way

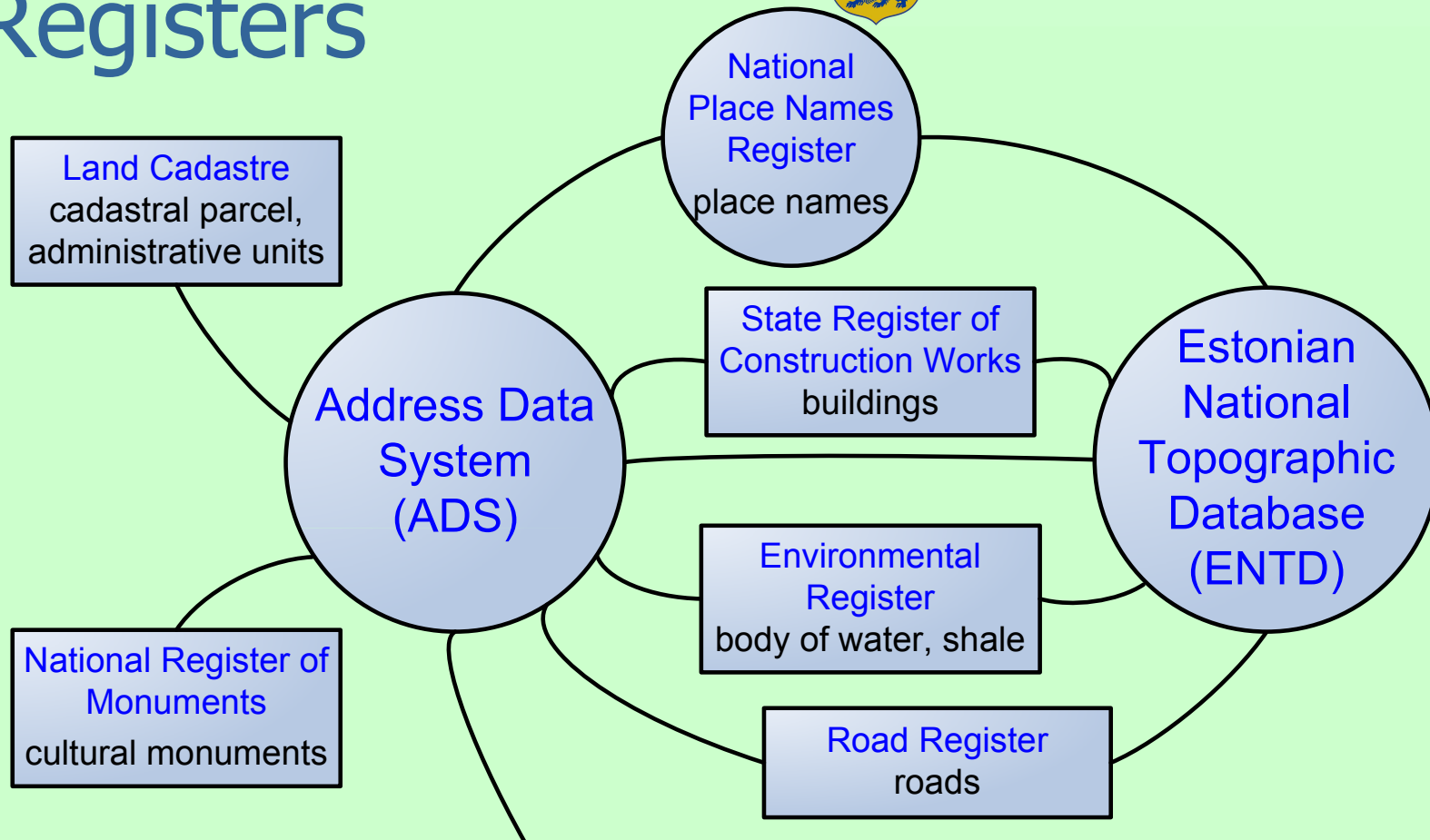


Databases / information systems





Registers



Registers and information systems which use the data, public and private sector

for example: Population Register, Commercial Register, Land Register, Police Information System, Rescue Board, Alarm Centre, local governments, Estonian Post Ltd, Estonian Energy Company, communication company etc....



Unofficial address data

- Project will during summer of 2010 collect all address data used by people in their mutual communication or in the postal system that is administered by the private sector.
 - This provides the state with a possibility to perform additional checks in the establishment of place names and in the quality of address data, and if necessary, to request the local governments to remove the errors.
-

Public application of the Place Names Register <http://xgis.maaamet.ee/knravalik/>



MAA-AMET
Estonian Land Board

X-GIS(4) Portal

Riikliku kohanimeregistri avalik teenus
Vastutav töötaja Siseministeerium
Volitatud töötaja Maa-amet

X-GIS(4) Portal

Home

SEARCH FROM PLACE NAMES REGISTER

Additional information about the Place Names Register can be obtained: from the web pages of the [Ministry of the Interior](#), the [Place Names Board](#) and the [Land Board](#)

- * X-GIS map window needs Macromedia Flash Player v8.0
- * As a result of Search these place names will be displayed that correspond to all predefined criteria
- * Empty Fields do not limit the selection

Place name or part of name

starts with *

Place name status

Place name procedure status

Language

Type of named feature

Additional information (remarks)

County

Municipality

Settlement unit

Identifier

Space filter (L-Est coordinate system)

X-coordinate L-EST (6 300 000-6 700 000)

Y-coordinate L-EST (300 000-800 000)

Extent (m)

Place Names Register <http://www.maaamet.ee/knr/>

Find E-mail Home

Use of official place names in ADS



- Roads' name in National Place Names Register, spatial figure and address point

Use of official place names in ADS 2



- Cadastral parcel geometry and geographical addresses in Land Cadastre

Auxiliary tool



The screenshot shows the ADS map application interface. At the top left, a toolbar contains several icons, with the first icon (a green square with a white grid) highlighted by a red box. A red arrow points from this icon to a yellow text box. The main map area displays an aerial view with yellow measuring lines forming a path. A red line is drawn across the path, and a red arrow points from a yellow text box to it. An 'Info' window is open over the map, showing a dropdown menu set to 'punane' (red), and fields for 'Viimane lõik: 174 m' and 'Kogupikkus: 281 m'. Below these are checkboxes for 'näita vahemaid' and 'näita pindala', and buttons for 'Lisa punkt', 'Muuda punkt', and 'Kustuta punkt'. On the right side, a sidebar contains a 'Navigatsioon' section with a map of Estonia and a 'Seaded' section. The 'Seaded' section has a 'Trükised' (Print) button highlighted by a red box, with a red arrow pointing to it from another yellow text box. Below the 'Trükised' section are options for 'Formaat' (A4 or A3), 'Mõõtkava' (1:2000), 'Pealkiri' (Uus tänav), and 'Sisutekstid' (Uus tänav Haljalas). There are also checkboxes for 'Trükkida objekti atribuudid', 'Trükkida otsinguobjektid', and 'Vahemaade mõõtmine'.

It is possible to measure distances and to select a line colour

The picture with measuring lines can be printed out or saved into your computer

In the map application of ADS it is possible to provide the decision of the place name establishment with a sketch map at chosen scale



More information

- [Place Names Act](#)
 - The Place Names Board of Estonia <http://www.eki.ee/knn/index2.htm>
 - [Government of the Republic Regulation No. 251 of 20 December 2007 "Address Data System"](#)
 - The Place Names Register is available at:
<http://xgis.maaamet.ee/knravalik/>
 - National Place Names Register in English:
<http://xgis.maaamet.ee/knravalik/knr?LANG=EN>
 - Estonian Land Board: <http://www.maaamet.ee/>
 - Web Map Server: <http://xgis.maaamet.ee/>
 - [Address Data System \(ADS\)](#) :
http://www.maaamet.ee/index.php?lang_id=2&page_id=472&menu_id=78
 - <http://www.maaamet.ee/docs/ADS/UNGEGEN.ppt>
-



Thank you!
