



Latvian Geospatial
Information Agency

Standardization of Natural Feature Names in Latvia: the First Steps

The 17th Meeting of the Baltic Division of the United Nations
Group of Experts on Geographical Names (UNGEGN)
Warsaw, 29 June – 01 July 2015

Otilija Kovaļevska
Laboratory of Toponymy,
Department of Geodesy and Cartography
<http://www.lgia.gov.lv>





Latvian Geospatial
Information Agency

History

Standardization of place names in Latvia after reinstating the independence (since 1990-ies)

field work, studying different sources, selecting of preferred names, creating an electronic database, compilation and editing a place names coverage for maps scale 1:50 000, compilation of dictionaries

Vietvārdu datubāze
Publiskā versija
6. izdevums
Publicēta 2013. gada 12. februārī

Datu meklēšanas nosacījumi > Meklēšanas rezultāti >

Meklēšanas rezultāti

Izvēlētie meklēšanas kritēriji:
Administratīvais reģions = Vidzeme
Objekta veids = ezers

	Pamatnosaukums	Objekta veids	Objekta stāvoklis	Oficiālais nosaukums	Citi nosaukumi
Skatīt	Aizkalnes ezers	ezers	pastāv		
Skatīt	Alaiņu ezers	ezers	pastāv		
Skatīt	Aldaru ezers	ezers	pastāv		
Skatīt	Alūksnes ezers (Olukšnes azars (izloksnē))	ezers	pastāv		
Skatīt	Annas ezers (Nelabais ezers)	ezers	pastāv		
Skatīt	Asaru ezers	ezers	pastāv		
Skatīt	Asaru ezers	ezers	pastāv		
Skatīt	Aujukalna ezers	ezers	pastāv		
Skatīt	Āraišu ezers	ezers	pastāv		
Skatīt	Āžkalna ezers	ezers	pastāv		
Skatīt	Bebriņu ezers	ezers	pastāv		
Skatīt	Bezdzibenis	ezers	pastāv		

Latvian Geospatial Information Agency Publications:

- LATVIJAS REPUBLIKAS TOPOGRĀFISKĀ KARTE** (Mēroga 1:50 000, 2. izdevums)
- LATVIJAS REPUBLIKAS GEOGRĀFISKIE NOSAUKUMI** (Kartēm mēroga 1:1 000 000, Concise Gazetteer of the Republic of Latvia, Scale 1:1 000 000, Rīga 2003)
- ZAUBES PAGASTS** (vietas un vārdi)
- SĒLPILS PAGASTS** (Pētnieciska vietvārdu vārdnīca, Daba, iedzīvotāji, ievotās vietas, vēsture)



Latvian Geospatial
Information Agency

Natural Feature Names in Latvia. Problems

- More than two names for one feature
(Daguma ezers / Pelēčāres ezers)
- Different institutions use different names for the same feature
- Lack of uniformity in reflecting dialectal and vernacular differences, imprecise (even erroneous) spelling
(Dreidzs, Drīdzs, Drīdzis, Dridzis, Drīdža ezers, Dridža ezers)
- Discrepancies between written and local, traditional forms of names
- Imprecise (even erroneous) representation of names in legislative acts
(Cārmins, Cārmans, Cērmenes ezers, Cārmaņa ezers)



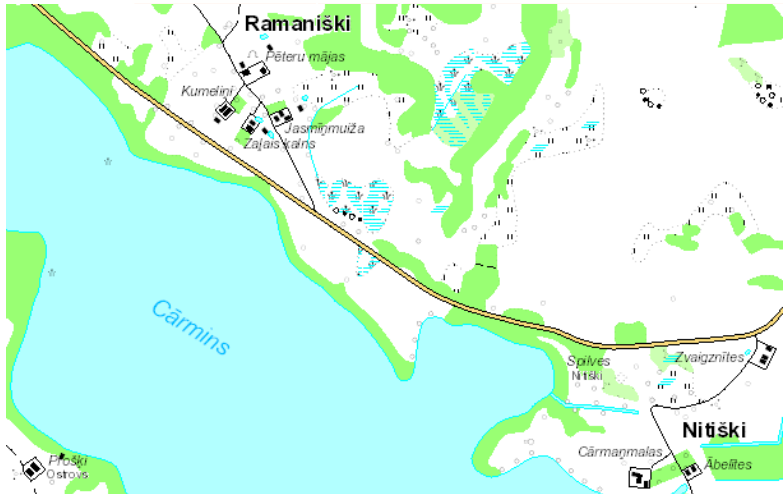
Latvian Geospatial
Information Agency

Cārmins or *Cārmans*, local (Latgalian): *Cārmyns*

In Civil Law Supplements, incorrectly:

Cērmenes ezers (Cārmaņa ezers)

Avota veids	Gads	Avota pilns nosaukums	Citāts no avota
Publicēta literatūra	1765	Инвентарь староства Динабургскаго, составленный 1 февраля 1765 года // Довгялло Д. И. Историко-юридические материалы..., 1903, с. 3-90.	jeziuro Carman
Publicēta literatūra	1784	Brežgo B. Latgolas inventari un generalmēreīsonas zem'u aproksti, 1665.-1784. – Daugavpils, 1943.	Царманъ
Kartes	1785	План генерального межевания Динабургского уезда 1780-1790 гг., М 1:84 000 (2 версты в дюйме).	озе: Цырманъ
Kartes	1867	Трехверстная военная топографическая карта Российской империи М 1:126000. Авт. Ф. Ф. Шуберт. Рекогн. 1867 г., печатано 1915 г.	оз. Цирманъ
Publicēta literatūra	1878	Сементовский А. М. Памятная книжка Витебской губернии на 1878 год. - Витебск, 1878.	оз. Царманъ
Publicēta literatūra	1893	Сапунов А. Река Западная Двина. – Витебск, 1893.	Царманъ
Publicēta literatūra	1906	Список населенных мест Витебской губернии. Издание Витебского Статитического Комитета и Губернской Типо-Литографии, под ред. А. Сапунова, Витебск, 1906.	Цармонъ
Kartes	1924	Latvijas topogrāfiskā karte M 1:75 000. Armijas štāba ģeodēzijas un topogrāfijas daļas 1922.-1928.g. izdevums.	Carmanu ez.
Kartes	1930	Mantnieks P. Lielā Latvijas karte. M 1:250 000 un Alfabetisks Latvijas vietu vārdu saraksts. – R.: P. Mantnieks, kartogrāfisks institūts, 1930.	Carmanu ez.
Publicēta literatūra	1967	Latvijas PSR mazā enciklopēdija. I-III sēj. – R.: Zinātne, 1967.-1970.	Cārmaņa ezers, Cērmena ezers
		P M 1:10 000. ГУГК, съёмка 1950–1952, 1971–1982 гг., изд. 1976–	оз. Царману
		P M 1:25 000. ГУГК, съёмка 1948–1952, 1971–1982 гг., изд. 1976–	оз. Царману
		burtn. Sastādītāja R. Avotiņa. - R.: P. Stučkas Latvijas Valsts	Cārmaņa, Cārmaņu, Cērmena [kļūd. - O.K.], Cormaņa [kļūd. - O.K.] ez.
		Zemesprojekts, 1990.	Cārmaņa ez.
		Latvijas enciklopēdija, 1994–1997.	Cārmans
		sko nosaukumu vārdnīca. – R., 1997.	Cārmins, Cārmans, latg. Cārmyns
		- R.: Apgāds „Preses nams”, 2001–2002.	Cārmins [Cārmyns], Cārmans
		Vides aģentūra, 2005.	Cārmans
		publisko ezeru un upju saraksts // 22.02.2007. likums "Grozījums [stājas spēkā 22.03.2007.]	Cārmaņa ezers (Cārmins)
		ģeogrāfiskās kartes pielikums - detalizēts ezeru un upju nosaukumu grozījumu 9.02.2008	Cārmenes ezers (Cārmaņa ezers)
Normatīvais akts	2010	30.03.2010. MK noteikumi Nr.318 "Noteikumi par ūdens saimniecisko iecirkņu klasifikatoru" ("LV", 54 (4246), 06.04.2010.) [stājas spēkā 07.04.2010.]	Cārmins
Normatīvais akts	2011	Civillikuma I. PIELIKUMS (1102.pantam). Publisko ezeru un upju saraksts (Pielikums 22.02.2007. likuma redakcija ar grozījumiem, kas izdarīti ar 28.10.2010. likumu, kas stājas spēkā 01.02.2011.).	Cārmaņa ezers (Cārmins)
Normatīvais akts	2012	14.08.2012. MK noteikumi Nr.551 "Noteikumi par ūdenstilpju klasifikatoru".	Cārmenes ezers (Cārmaņa ezers)



Legislative Acts Containing Lists of Geographical Names

- Law on Administrative Territories and Populated Areas (2008)
- Civil Law Supplements (2007, 2010)
List of Public Lakes and Rivers
- regulations regarding some State Classifiers
Regulations Regarding the Classifier of Water Bodies (2012)
Classifier of Water Management Districts (2010) etc.

Although these legislative acts in the direct sense do not refer to the toponymy, but to the objects themselves, nonetheless, the spelling of place names in these documents greatly affects the use of geographical names. If a place name in the legislative act is erroneous, it is quite difficult to correct it



Latvian Geospatial
Information Agency

Legislative Acts Referred to Geographical Names

Policy and procedures:

- *State Language Law (1999)*
- *Geospatial Information Law (2009)*
- specific regulations e.g. *Regulations on the Address System (2009)*
- [Regulations on the Toponymic Information \(2012\)](#)
 - ✓ principles,
 - ✓ policies,
 - ✓ authorities responsible for the geographical names standardization, including the **names of natural features**:
 - *Latvian Geospatial Information Agency, Ministry of Transport, local governments (partly)*
 - *State Language Centre (whose opinion is binding for the institutions assigning the official names)*



Latvian Geospatial
Information Agency

Geographical Names of Latvia. The Responsible Institutions

Supervision for the standardization of geographical names

- State Language Center

Maintenance of the geographical names information

- State Land Service (names used in addresses, names of real estates and cadastral units – in the [*National Adress Register*](#))
- LGIA (names for geospatial information)
- other different institutions – names used in their specific practice



Latvian Geospatial
Information Agency

The Responsible Institutions Having Rights to Approve the Official Names

According to the Regulations on the Toponymic Information (2012):

- names of administrative and territorial units, cities and towns – Parliament and Government
- names of other populated places (houses, homesteads, villages), streets, parks and other man-made features – local governments
- names of transportation features, nature conservation areas, cultural-historical features etc. – mainly responsible ministries
- **natural feature names** (except features, essential for maritime navigation) - [Latvian Geospatial Information Agency \(LGIA\)](#)



Latvian Geospatial
Information Agency

According to the **article 88** of the *Regulations on the Toponymic Information (2012)*:

The Latvian Geospatial Information Agency shall to **January 10, 2016** evaluate the status of geographical names of natural features existing in the Geographical name Database and submit, in the form of an electronic list, proposals to the State Language Centre on assigning of official names and official parallel names.



Latvian Geospatial
Information Agency

Official Names for the Natural Features. The Main Challenges

- Controversy of information regarding configuration and names of the features (mainly - rivers) between all the most significant data sources outside LGIA ([Classifier of Flowing Water Resources Sections](#), [Digital Cadastre of Amelioration](#))
- [Regulations on the Toponymic Information](#) contains complicated standards, not easy for clear and unambiguous understanding and implementation
- Drastic changes of standardization principles toward saving and preserving the dialectal peculiarities in some areas seem almost unacceptable for people being forced to cut off the use of their dialect until late 1990-s
- *Regulations on the Toponymic Information* were adopted very late, (20 years after reinstating the independence) – the usage of imprecise geographical names (or inaccurate spelling) has become customary in many cases

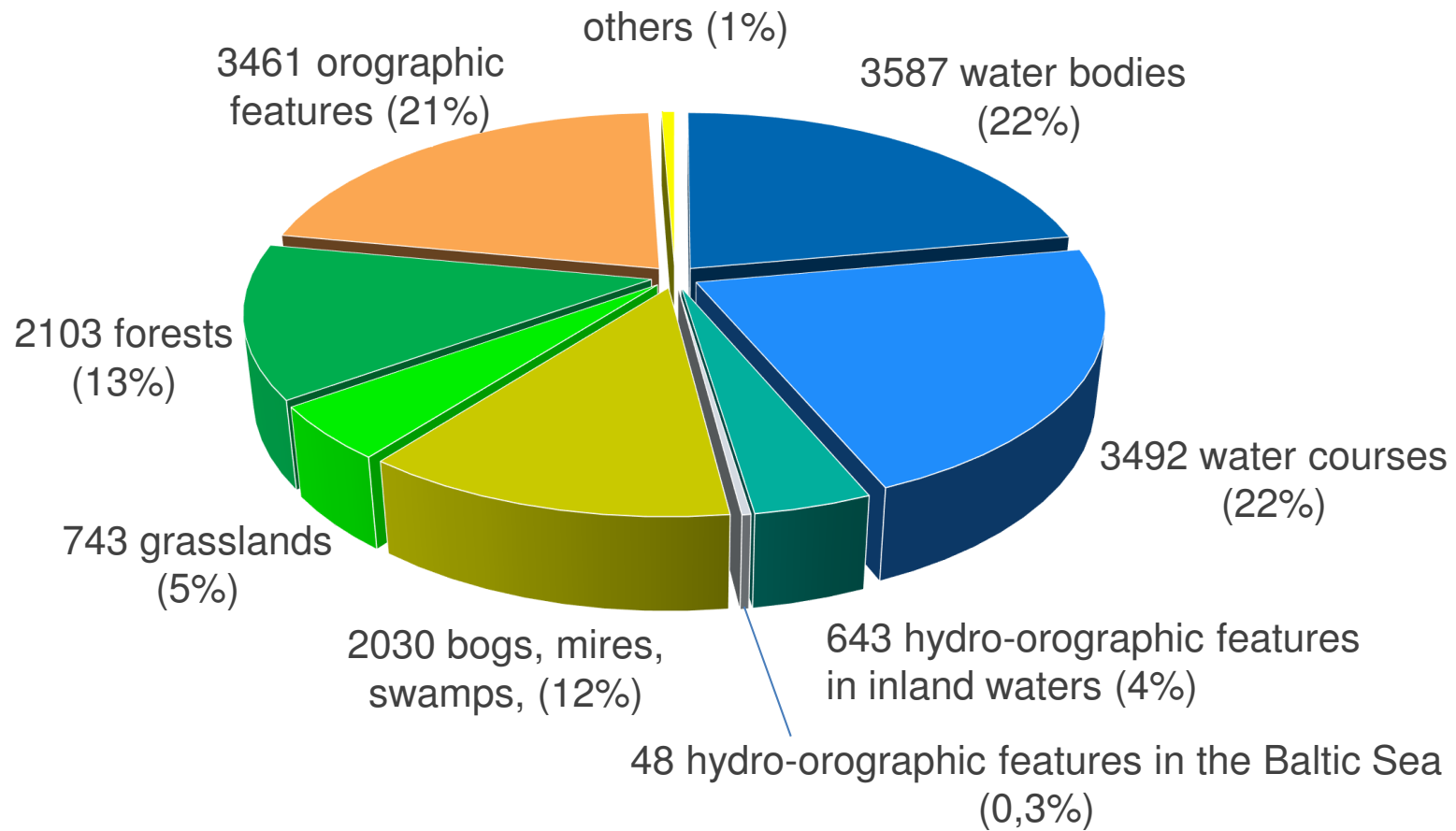


Latvian Geospatial
Information Agency

Natural feature names in the public database

<http://vietvardi.lgia.gov.lv/>

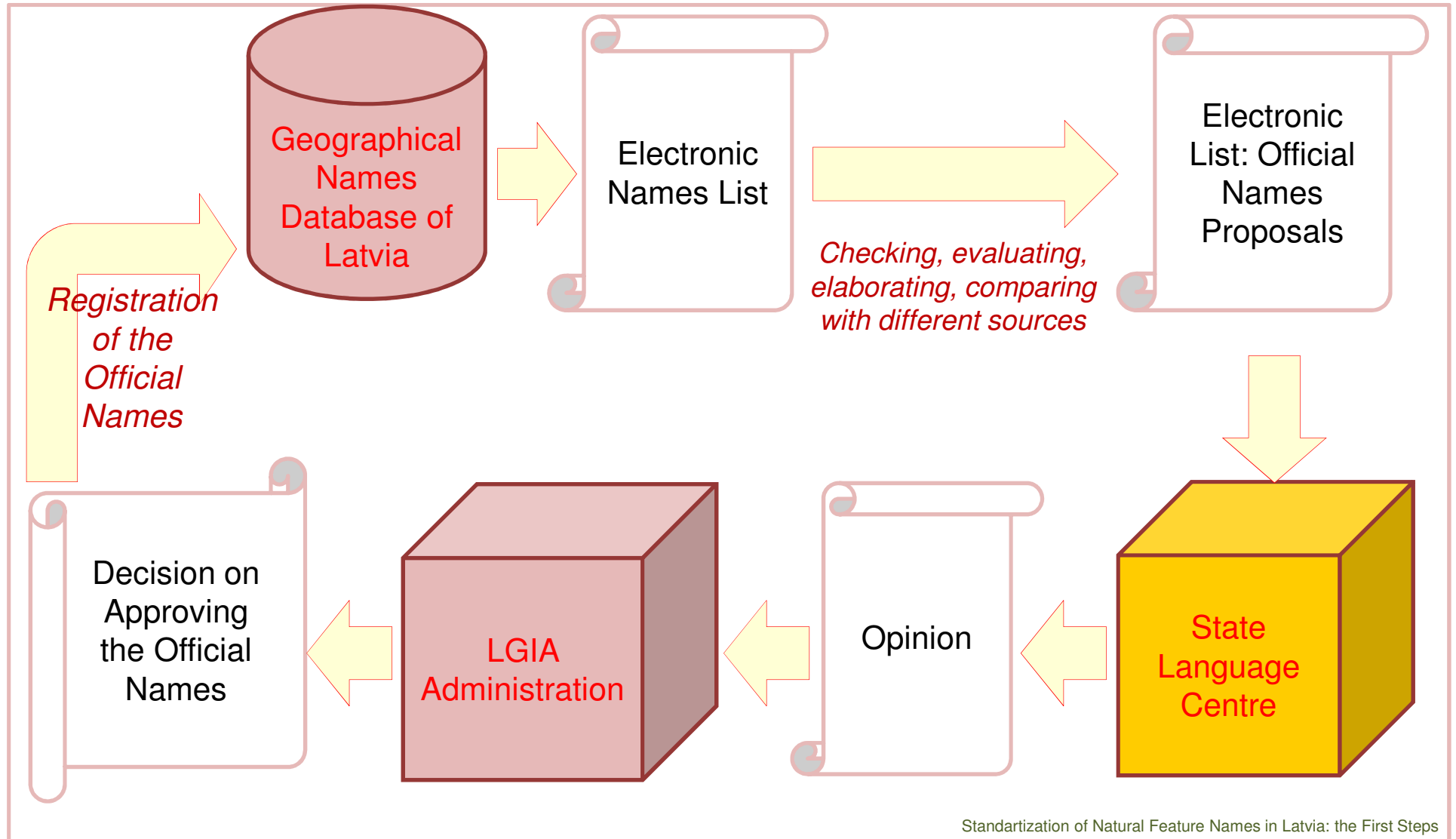
~16 200 objects (19.06.2015)





Latvian Geospatial
Information Agency

The process of standartization of natural feature names

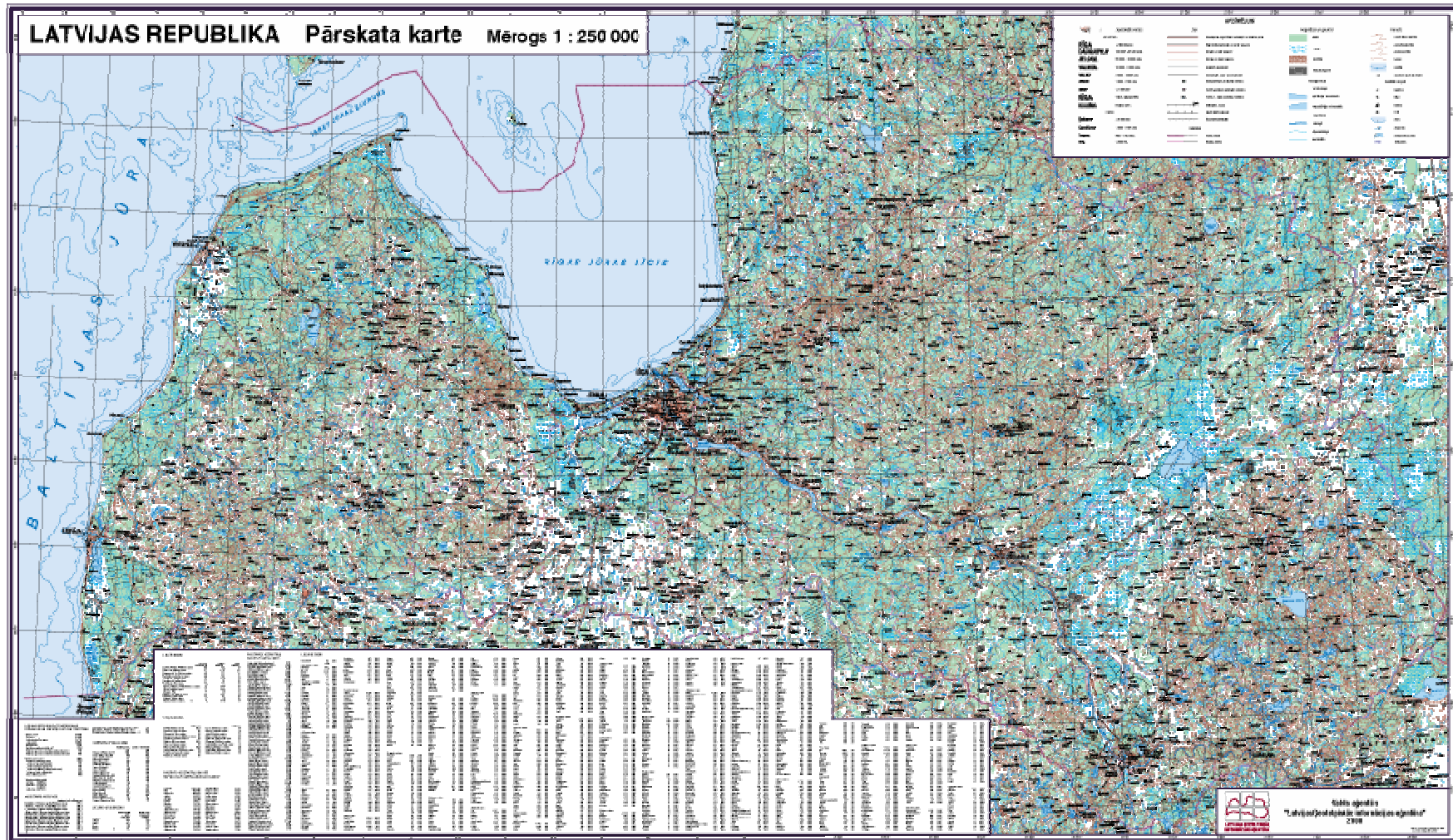




Latvian Geospatial
Information Agency

The 1st step of standardization (2014)

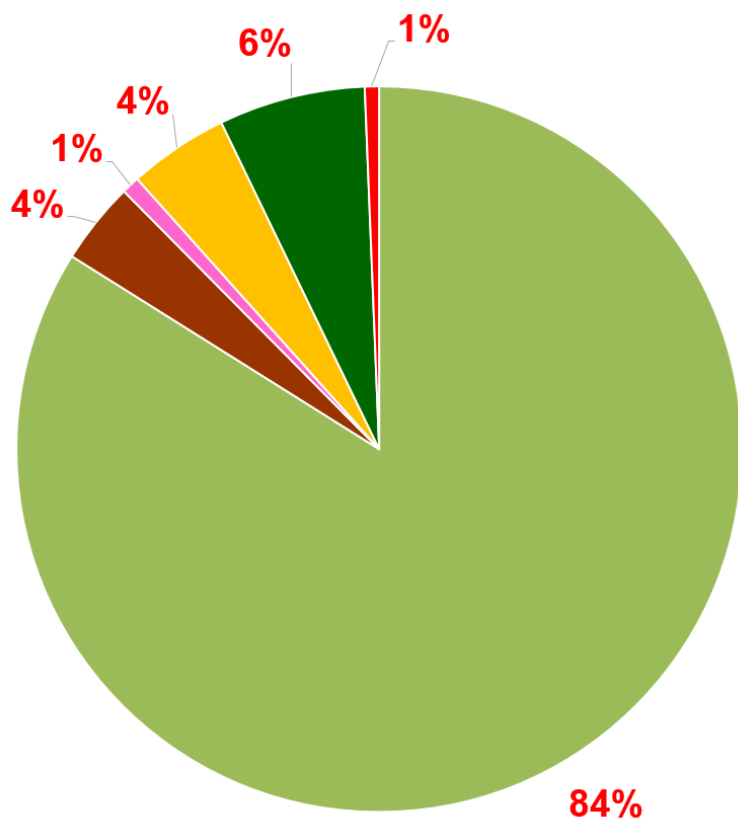
Names from the Overview map, scale 1:250 000
(the 2nd edition, 2012, contains **632** natural feature names)



The 1st step of standardization (2014)

Natural feature names in Overview map scale 1:250 000

628 natural feature names in total, including the:



- 527 stable place names (84%)
e.g. Abava; Usmas ezers; Gaiziņkalns
- 25 parallel names (4%)
e.g. Ungurs / Rustēgs; Svente / Virbupe
- 5 variants of names in brackets (1%)
e.g. Dienvidsusēja (Suseja); Spāre (Spāres upe)
- 27 local forms of names (4%)
e.g. Alūksne (Oluksne); Dviete (Dvīta)
- 40 Latgalian names in parentheses (6%)
e.g. Lubāns (Lubuons); Rušons (Rušyuns)
- 4 problematic names (1%)
e.g. Gusena ezers; Asūnīca

122 names - with pronunciation

e.g. Alokste [uo]; Bolupe [o]; Sesava [e]



Latvian Geospatial
Information Agency

The 2nd step standartization (2014-2015)

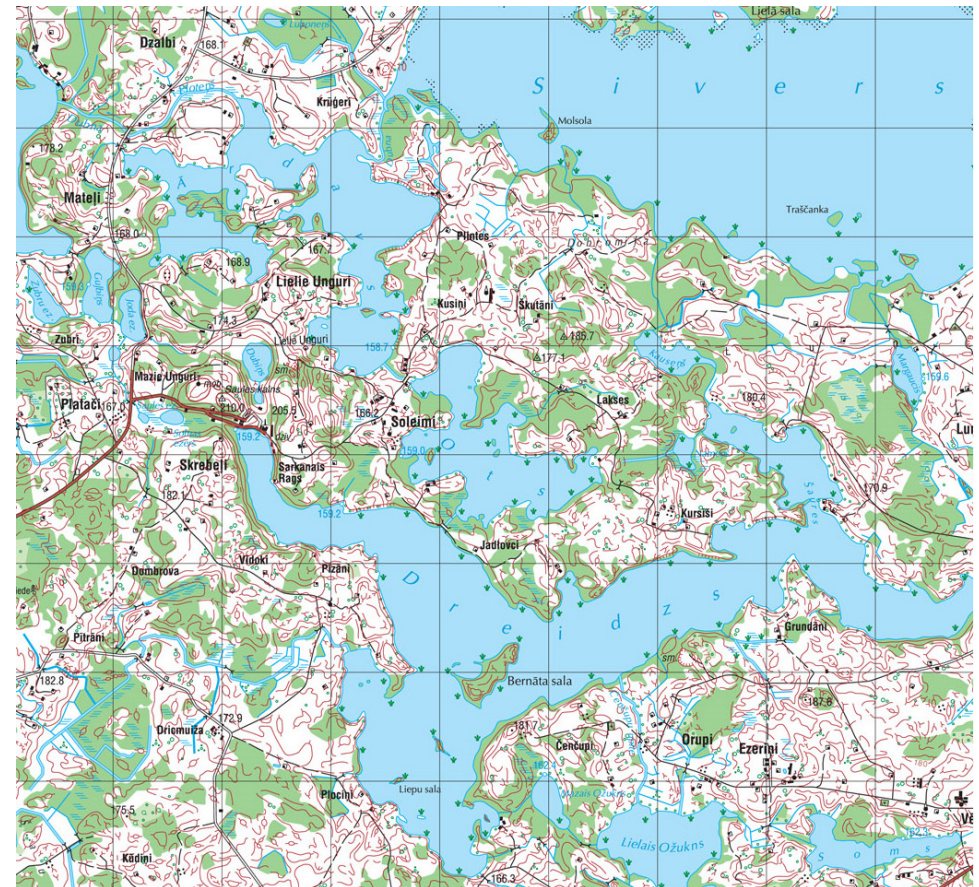
Names from the Topografical map, scale 1:50 000

(contains **6227** natural feature names)

In 2015 could be reviewed and prepared for the official approval
~1/3 of them

The selection of natural features requiring official names:

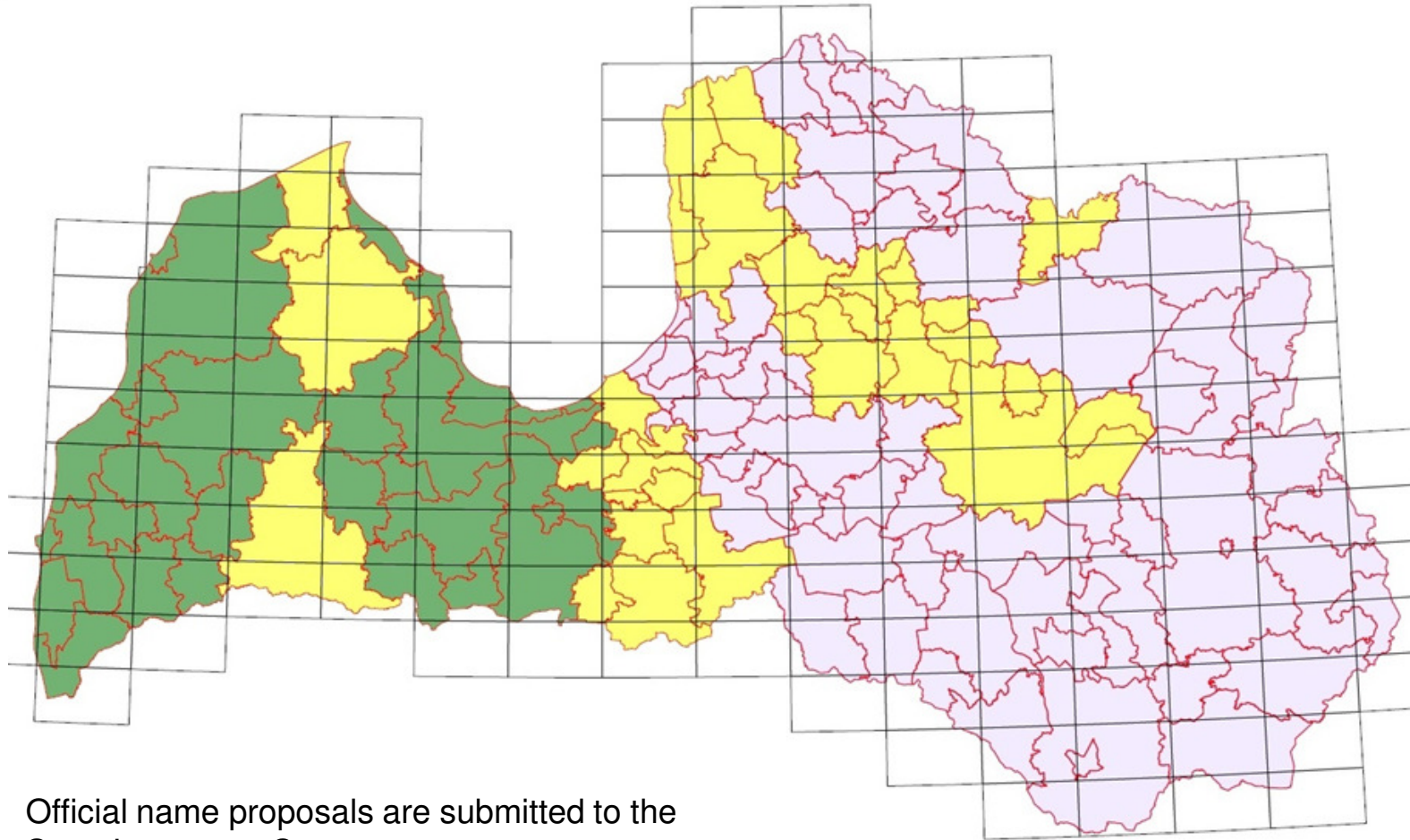
- a) features whose names are used in state legislative acts
- b) large geographical features
- c) the most popular features whose names appear in the public space (protected natural features, tourist objects etc.)
- d) natural features nearby the state border





Latvian Geospatial
Information Agency

The 2nd step standardization (2014-2015) Current Situation



Official name proposals are submitted to the
State Language Centre:



01.10.2014.



30.12.2014.



planned to be submitted this year (2015)



Latvian Geospatial
Information Agency

Benefits of standardization process

- errors are corrected
- the quality of Geographical Names Database is improved



- the gathered material (sources etc.) could be used for further research into the origin and development of geographical names
- in the long term - more correct and unambiguous geographical names are used in a public space - on maps, road signs, in tourism information, documents etc.



Latvian Geospatial Information Agency

- in the long term - more correct and unambiguous geographical names are used in a public space - on maps, road signs, in tourism information, documents etc.



Vietvārdu datubāze

Datu meklēšanas nosacījumi > Meklēšanas rezultāti > Informācija par objektu

Informācija par objektu

Objekta ID:

Pamatnosaukums: Zirga ezers

Pamatnosaukums pārbaudīts: (28.02.2012)

Nosaukums kartē: Zirga ezers

Nosaukums Adrešu klasifikatorā:

Nosaukumi: Zirgezers
Zirgu ezers
Zyrga azars (latgaliski)



Avota pilns nosaukums	Sējums, lappuse vai individuālā avota pieraksts	Citāts no avota
План генерального межевания Динабургского уезда 1780-1790 гг., М 1:84 000 (2 версты в дюйме).		озе: Жиркь
Latvijas topogrāfiskā karte M 1:75 000. Armijas štāba ģeodēzijas un topogrāfijas daļas 1922.-1928.g. izdevums.		nav
Mantnieks P. Lielā Latvijas karte. M 1:250 000 un Alfabetisks Latvijas vietu vārdu saraksts. – R.: P. Mantnieks, kartogrāfisks institūts, 1930.		Zirgu ez.
Latvijas pagastu kartes M 1:25 000. – R.: Zemesprojekts, 1990.		Zirga ez.
Топографические карты Латвийской ССР М 1:10 000. ГУГК, съёмка 1950–1952, 1971–1982 гг., изд. 1976–1977 гг.		оз. Зиргу
Топографические карты Латвийской ССР М 1:25 000. ГУГК, съёмка 1948–1952, 1971–1982 гг., изд. 1976–1983 гг.		оз. Зирга
Civillikuma 2. pielikums (1115. pantam). Ezeru saraksts, kuros zvejas tiesības pieder valstij // Pielikums 14.05.1998. likuma redakcijā ar grozījumiem, kas izdarīti ar 17.09.1998. un 12.12.2002. likumu, kas stājas spēkā 01.01.2003.		Zirga ezers



Vietvārdu datubāze

	Pamatnosaukums	Objekta ID	Objekta veids	Objekta stāvoklis	Citi nosaukumi	Administratīvā vai teritoriālā vienība
Skatīt	Zirga ezers	11178	ezers	pastāv	Zirgezers Zirgu ezers Zyrga azars (latgaliski)	Krāslavas pagasts, Krāslavas novads,
Skatīt	Zirgazars	77795	ezers	pastāv	Zirgu ezers Zirgezers	Daugavpils, Latvija



Latvian Geospatial
Information Agency

Thank you for your attention!

Otīlija Kovalevska

Laboratory of Toponymy, Department of Geodesy and Cartography

e-mail: otilija.kovalevska@lgia.gov.lv

